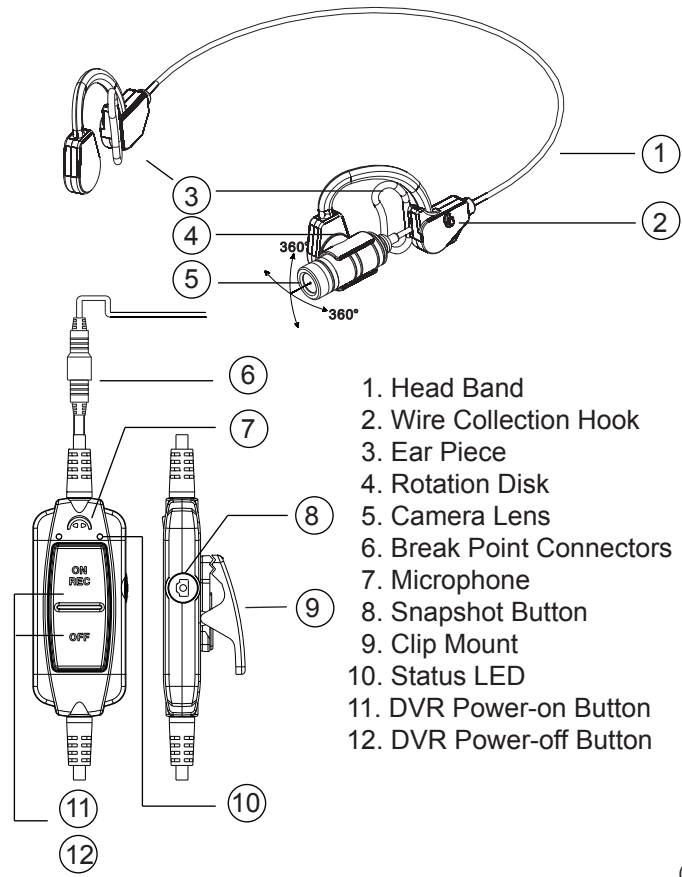


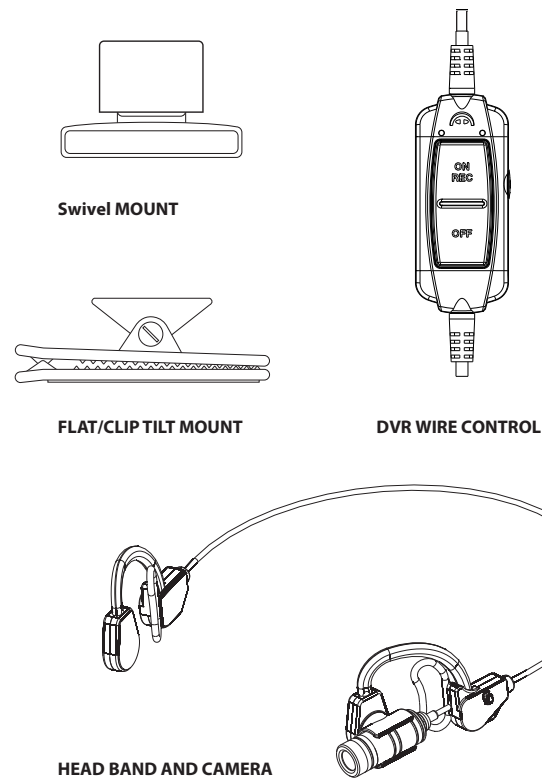
### 1. Name and Parts



1. Head Band
2. Wire Collection Hook
3. Ear Piece
4. Rotation Disk
5. Camera Lens
6. Break Point Connectors
7. Microphone
8. Snapshot Button
9. Clip Mount
10. Status LED
11. DVR Power-on Button
12. DVR Power-off Button

(1)

### 2. Package Content



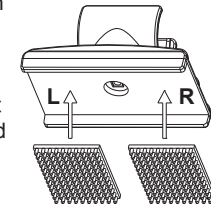
(2)

### 3. Dual Lock Application

To ensure a perfect match of two subjects using the supplied 3M Dual Lock tapes (this applies to Velcro too), here's how to proceed:

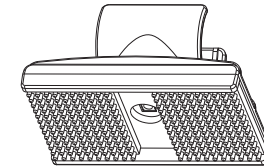
#### Step 1:

Clean the surface of the camera mount with alcohol and wipe dry before you start. Attach the supplied smaller 3M Dual lock tapes as shown in illustration 1. Align the 3M Dual lock tapes of the very left and right side of the mount. Leave the tapes attached to the mount for at least 24 hours for maximum holding force.



#### Step 2:

When the two smaller 3M Dual Lock tapes are correctly attached to the sides of the mount an adequate space should be vacant in the middle as shown in illustration 2. By reserving a dent in the middle would ensure the 3M Dual Lock tapes strongly attached to a sphere shape object like a helmet.



#### Step 3:

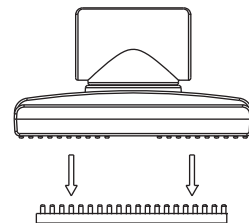
Clean the surface of the helmet with alcohol and wipe dry before you start attach the supplied bigger 3M Dual Lock tapes as shown in illustration 3.



(3)

#### Step 4:

It is very important to leave both the mount and helmet attached to each other for at least 24 hours. This would ensure the tapes deliver maximum adhesive power so that when detaching the mount from the helmet the tapes would not tear off from the object.



#### Application 1

- Attaching the mount on the top of a helmet



#### Application 2

- Attaching the mount on the side of a helmet  
(The camera angle is adjustable upwards or downwards)



### Bodyworn & In-car Applications

#### Fixed on lapel



#### Fixed on windshield

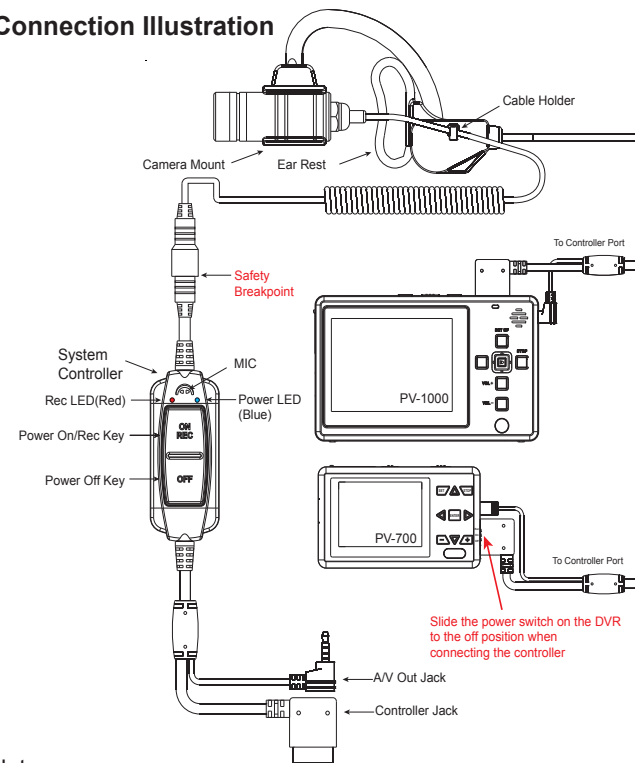


#### Fixed on dashboard



(4)

### 4. Connection Illustration



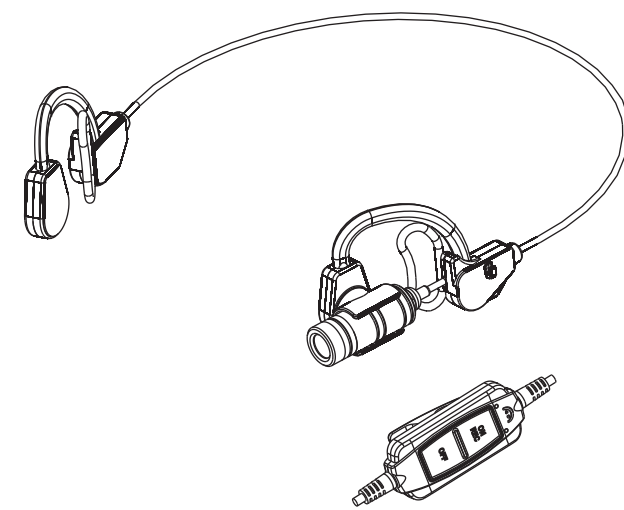
#### Note:

When the camera is connected to DVR, the controller will take over Power ON/OFF function. The DVR ON/OFF button will become invalid.

- Blue LED: Power ON
- Red LED: Recording

(5)

## ER-18 Tactical Helmet Camera Quick Guide



Law Enforcement Products Manufacturer

LawMate

V1.1